

## REN Riser Restorative Deep Cleaning

We understand most escalators are dirty and not ready for easy maintenance cleaning. They need restorative, deep cleaning before you can begin a regular maintenance program using REN pads.

Using RESTORE for Escalator Risers & Treads combined with the REN Riser Brush and REN Riser Pads gives you a low-cost solution to deep clean and restore your escalator risers.

### Items required:

- REN RESTORE liquid solution CS-20-00
- REN Riser Brush RB-10-00
- REN Telescoping Handle TH-10-00
- REN Riser Pads (order V or W pattern, identify manufacturer)
- REN Riser Head Unit RH-24-00
- Portable vacuum

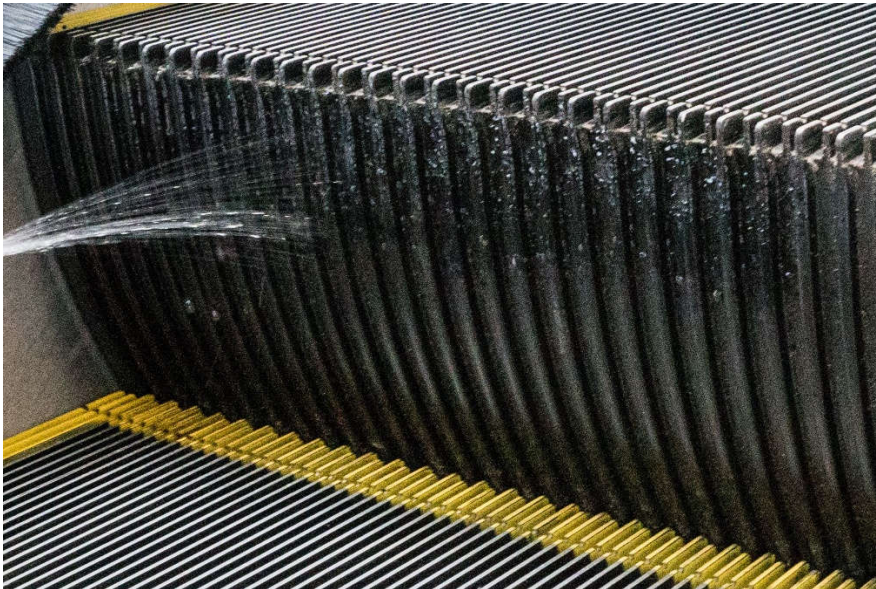
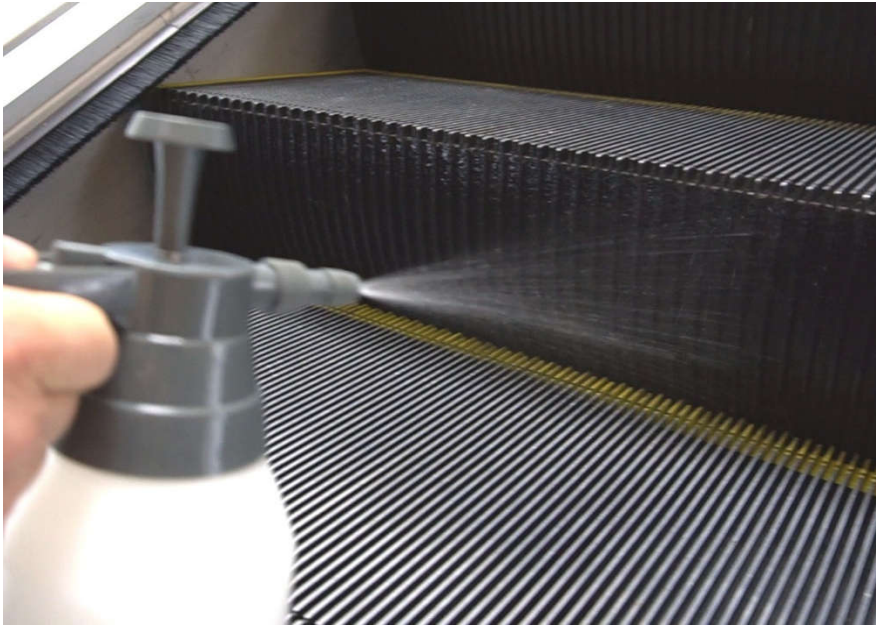
### 3 Easy Steps

1. Spray risers with RESTORE
2. REN Riser Brush agitation, scrubbing.
3. REN Riser Pads wipe clean the riser.

**\*DEEP CLEAN TREADS BEFORE RISERS**

Contact REN with any questions.

sales@renclean.com



## REN

### Riser Restorative Deep Cleaning

#### Step 1

#### RESTORE cleaning solution

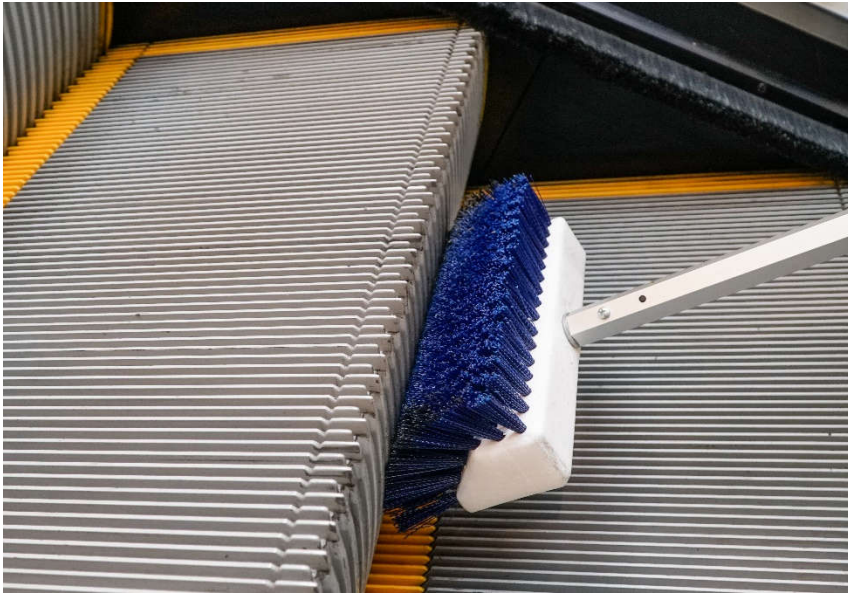
Specially formulated to allow safe, effective deep cleaning of all escalators.

The NO DRIP formula stays where you spray, clings to vertical surfaces. When sprayed through a nozzle, RESTORE activates into a micro gel and sticks to the surface.

Will not drip into the escalator mechanicals or chain drive system.

1. **STOP THE ESCALATOR.**
2. Do not dilute RESTORE cleaning liquid.
3. SHAKE before use.
4. Pour RESTORE into a spray bottle or pressure sprayer.
5. Adjust to a wide spray pattern.
6. Spray the risers, fully coating entire surface.
7. Allow RESTORE to rest on the riser for a few minutes before brushing.

Contact REN with any questions.  
[sales@renclean.com](mailto:sales@renclean.com)



## REN

### Riser Restorative Deep Cleaning

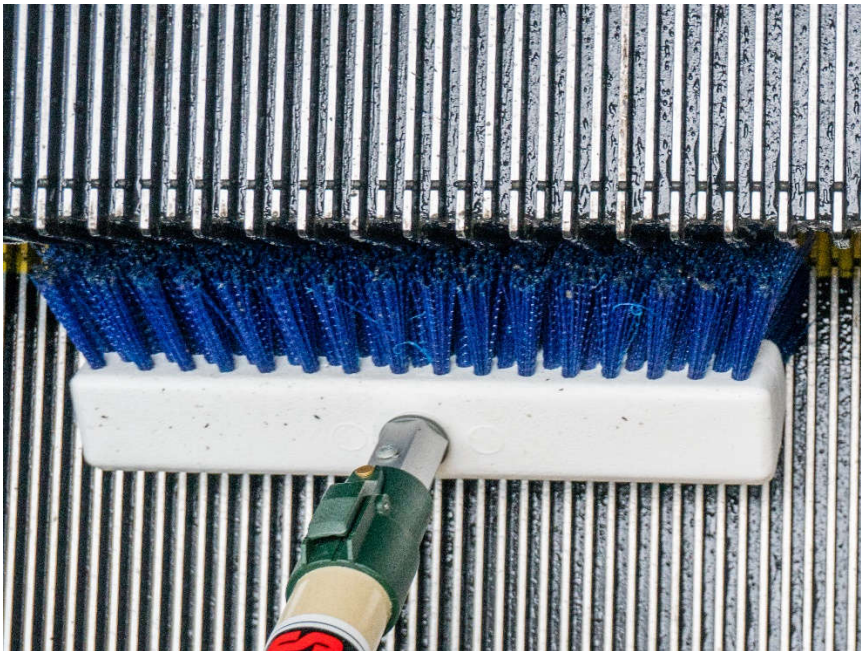
#### Step 2

#### REN Riser Brush

The REN Riser Brush has three profiles designed to adjust to the curved riser surface and reach into the corner where the riser meets the tread.

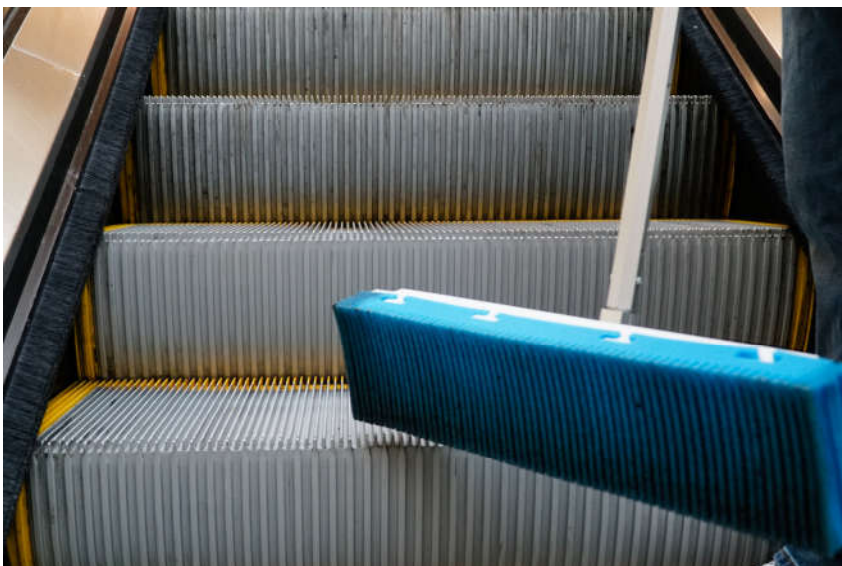
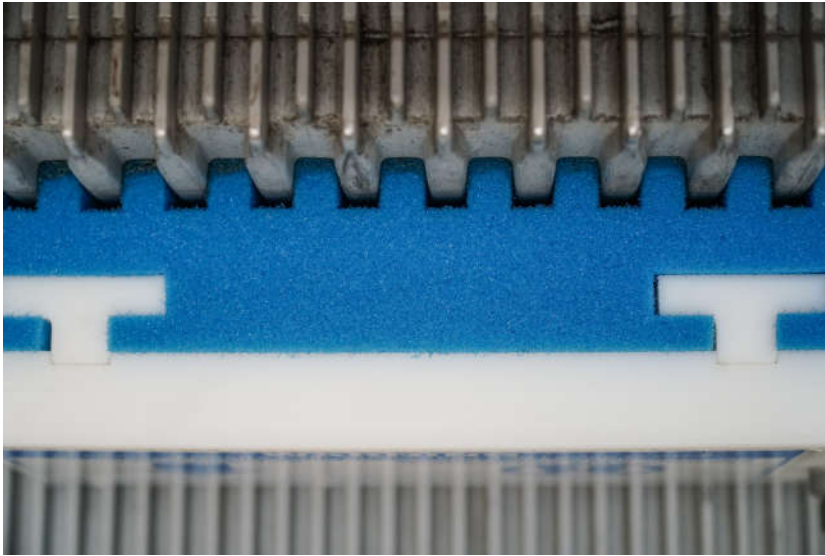
REN Riser Brush scrubbing with RESTORE will loosen the deep dirt and grease.

1. Attach the REN telescoping handle to the REN Riser Brush.
2. Manually scrub the risers in a up and down motion.
3. When the REN Riser Brush becomes loaded with dirt, vacuum the brush bristles.



Contact REN with any questions.

[sales@renclean.com](mailto:sales@renclean.com)



## REN

### Riser Restorative Deep Cleaning

#### Step 3

#### REN Riser Pad

REN Riser pads are curved to fit the riser shape and have engineered ridges spaced to fit perfectly into the riser grooves. Wipe to absorb and lift away the remaining dirt and grime, leaving a perfectly restored, clean riser surface.

Riser Pads can be washed and reused.

1. Place the Riser Pad on the Head unit in the correct direction, notched surface first.
2. Place the pad at the bottom of the riser and wipe upward.
3. Make sure to wipe all edges and corners.
4. Repeat the riser cleaning process for the remaining risers.
5. Wash Riser Pads for reuse

Contact REN with any questions.

[sales@renclean.com](mailto:sales@renclean.com)